

FROM FRIENDS TO ENEMIES: DID HENRY II ORDER THE MURDER OF ARCHBISHOP BECKET?

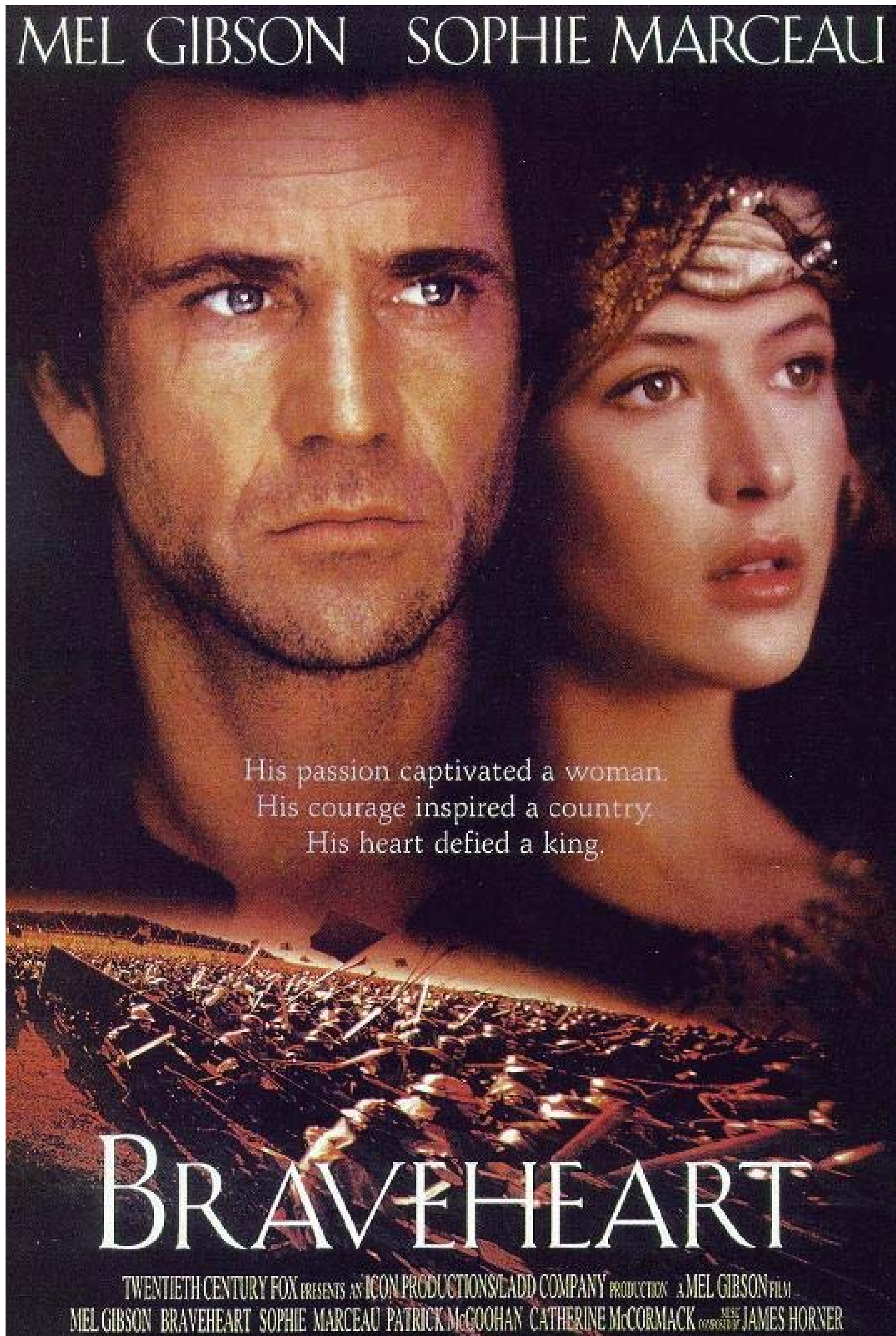


WAS THE BLACK DEATH A BLESSING IN DISGUISE?

Imago mortis



DO HOLLYWOOD FILMS GIVE AN ACCURATE PICTURE OF HISTORY? DOES IT MATTER?



Why did Harold lose the Battle of Hastings?



Was Charles I a saint or a villain?



How did the Great Fire change London?



WHY DID THIS QUEEN NEVER GET MARRIED?



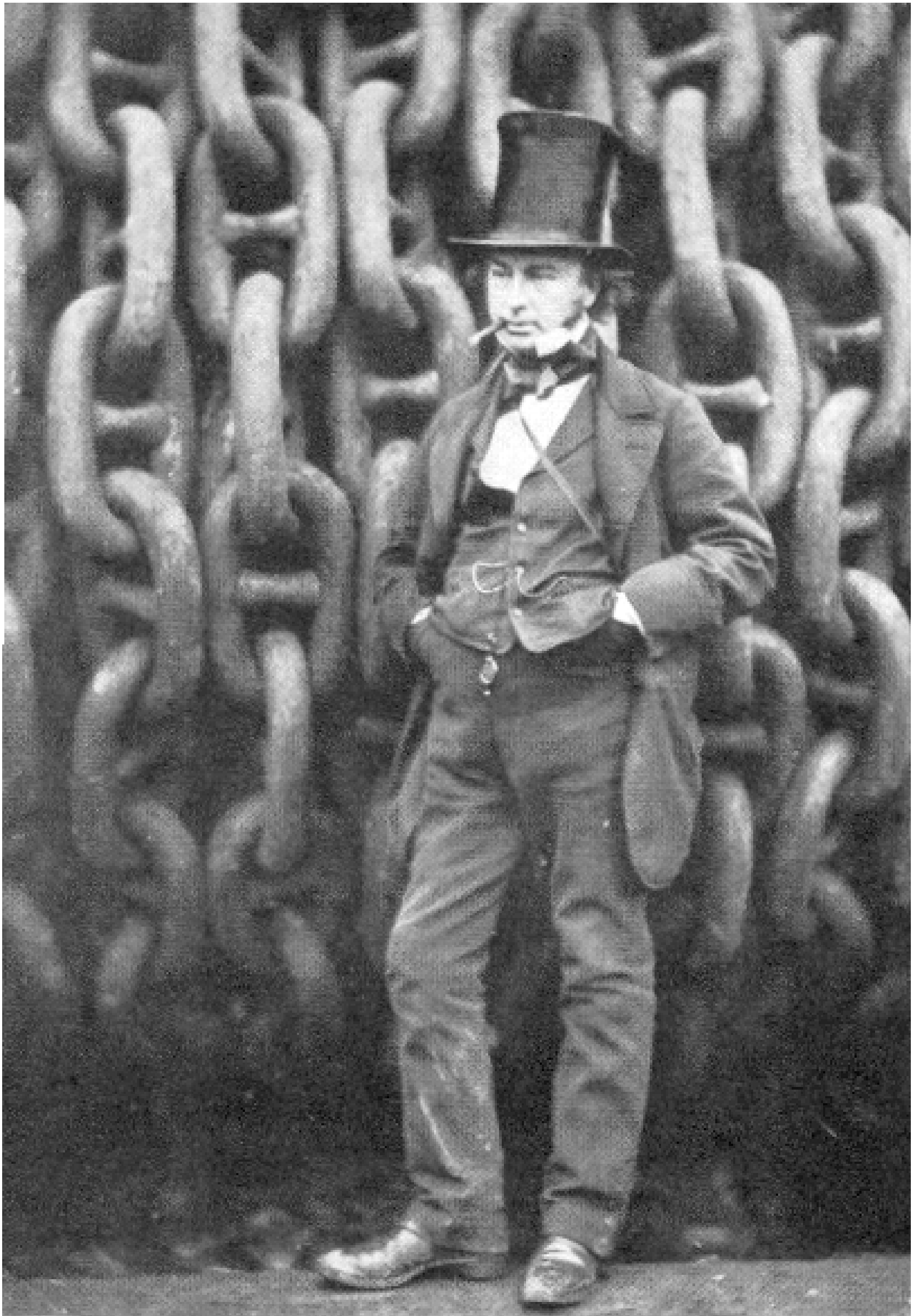
**Did this Queen really
deserve to be known as
'Bloody Mary'?**



Could the Plague ever return?



WHY WAS THIS VICTORIAN RECENTLY VOTED ONE OF THE GREATEST EVER BRITONS?



Why was Jack the Ripper never caught?



If Victorian Britain had the greatest Empire in the World, how do we explain this?



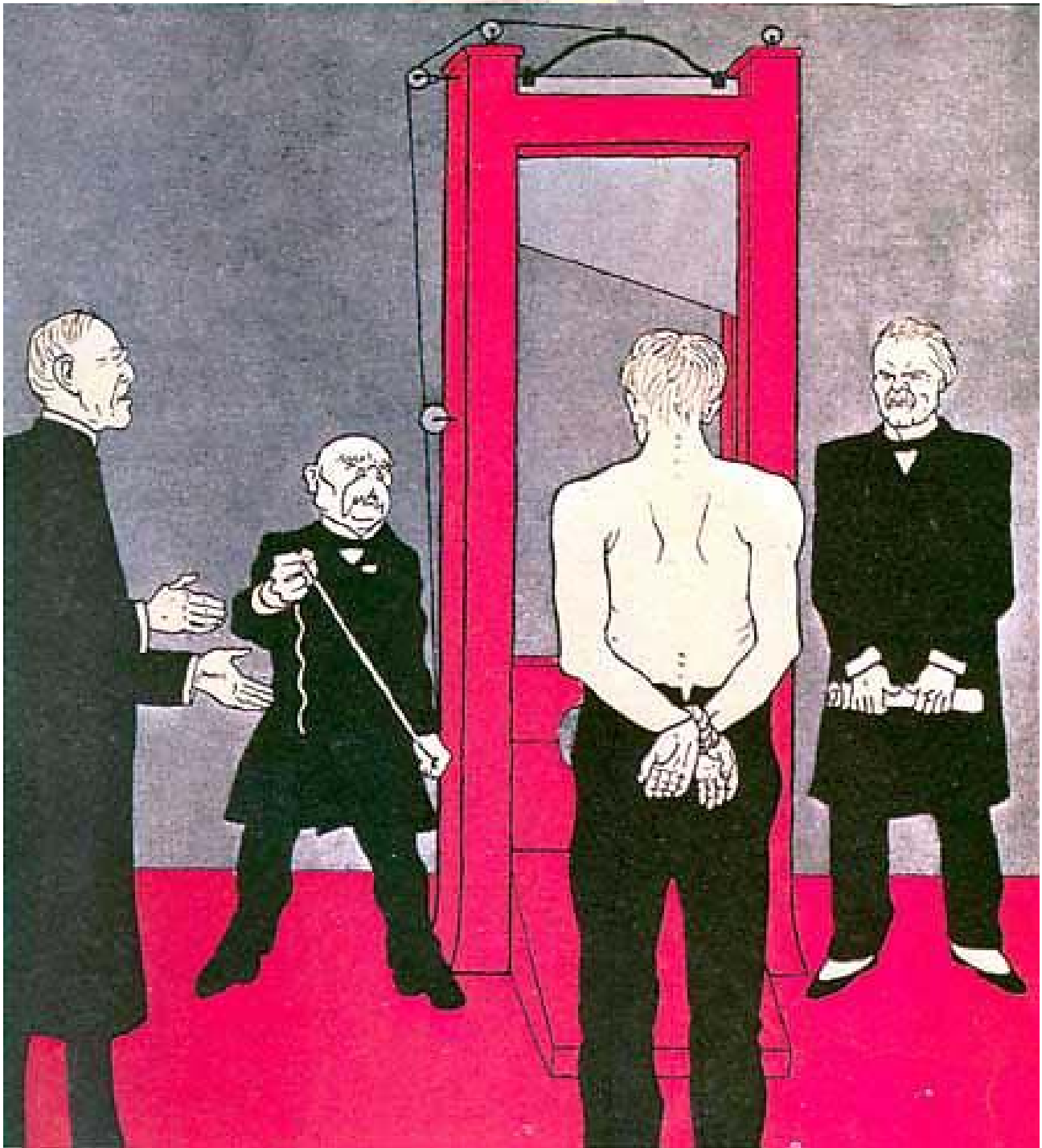
WAS VICTORIA'S EMPIRE RACIST?



Why did so many ordinary Germans help Hitler get into power?



DID THE TREATY OF VERSAILLES CAUSE WORLD WAR TWO?



Why did the police treat suffragettes like terrorists?



KEY TO ABOVE PHOTOGRAPHS OF KNOWN MILITANT SUFFRAGETTES.

Fig.	Name	Year Born	Height Ft. In.	Eyes	Hair.	C. R. O. Number.	Crime.
11.	Richardson Mary	1883	5. 5½	Brown.	Brown.	S.168429.	Arson.
12.	Dennis May @ Lillian Lenton.	1891.	5. 2¾	Brown.	D. Brown	S.167399.	Arson.
13.	Marion Kitty.	1872	5. 5½	Blue	Auburn	S.168044.	Arson.
14.	Forrester Lillian.	1880.	5. 3½	Grey.	Brown.	S.167641.	Damage.
15.	Johansen Miss.	1881	5. 5½	Blue.	Brown tg. grey	S.170195.	Damage.
16.	Giveen Clara.	1887.	5. 4.	Blue.	Fair.	S.168045.	Arson.
17.	Baines Jennie.	1864.	4. 10½	Brown.	D. Brown	S.165980.	Damage.
18.	Pratt Miriam.	1890.	5. 7½	Blue.	Lt. Brn.	S.172271.	Arson.

**Do you think it is appropriate for
World War One to be the subject of
comedy?**

