

SOURCEWORK ASSESSMENT: JACK THE RIPPER AND THE WHITECHAPEL MURDERS
(30 minutes available)

Source A: The East End in 1888



SOURCE B: Part of the Coroner's report of the death of Polly Nicholls

The body has not been dissected, but the injuries have been made by someone who had a lot of medical skill and knowledge. There are no meaningless cuts...No unskilled person could have known where to find the organs. No slaughterer of animals could have carried out these operations.

SOURCE C: A map of the East End in 1888 showing the sites of the murders



SOURCE D: The evidence of Elizabeth Long at the inquest into the death of Annie Chapman; she was describing the man seen talking to Annie before she was killed

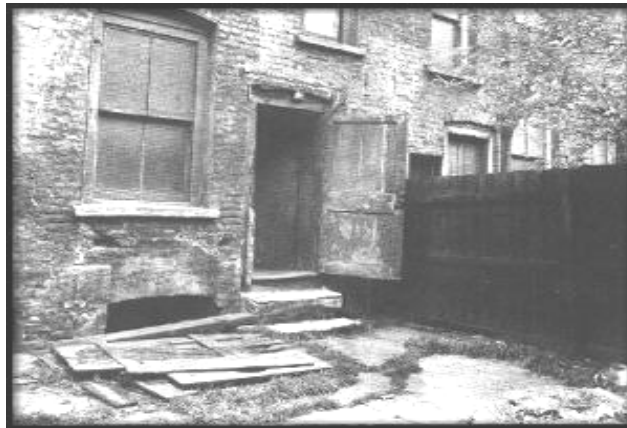
He was dark and was wearing a deerstalker hat. I think he was wearing a dark coat but I cannot be sure. He was a man over forty, as far as I could tell. He seemed to be a little taller than the deceased. He looked to me like a foreigner.

SOURCE E: Part of an article published in a local newspaper after the murders of Polly Nicholls and Annie Chapman

My informant demanded at that time that the police force on the spot should be strengthened and some kind of order created on the streets by night. He warned that murder would happen again if matters were left as they were. He was referred from one police office to another. Then came the first murder. He went to the police again and warned them there would be more mischief unless they could clear the streets of the open and defiant ruffianism, which continued to make night hideous. Then came another murder.

The main streets of Whitechapel are connected by a network of narrow, dark and crooked lanes. Every one containing some headquarters of infamy. The sights and sounds are an apocalypse of evil.

SOURCE F: A photograph of the back yard of 29 Hambury Street. Annie Chapman's body was lying against the fence with her head on the step.



Questions

1. Use the sources and your own knowledge. [5]
What was London like in the late nineteenth century?

2. Use all of the sources and your own knowledge. [5]
Why did the Whitechapel murders attract so much attention?

3. Study Sources D & E [5]
How far does Source E agree with Source D about why the Ripper was not caught?

4. Use your own knowledge to answer this question. [10]
"The Whitechapel Murders were directly responsible for an improvement in conditions in the East End after 1888"
Do you agree?

MARKSCHEME**1. What was London was like in the late nineteenth century? [5]**

- | | | |
|----|---|-------|
| L1 | Simple statements unsupported by specific knowledge (“It was nasty and dirty”) | [1-2] |
| L2 | Developed statements supported by specific contextual knowledge and/or sources, e.g. details about living and working conditions in the east and west ends, workhouses, poverty, crime etc. | [3-4] |
| L3 | As above, but inferences made from those facts to reach a deeper understanding (“because there was no social security many poor women had to resort to prostitution to survive”). Give top marks too within this level for students who distinguish between life in the East End and in the West End. | [4-5] |

2. Use all of the sources and your own knowledge. [5]
Why did the Whitechapel murders attract so much attention?

Award one mark for each valid point made, and one point for supporting detail, to a maximum of 5 marks.

e.g. – “He was the first serial killer (1) and he was never caught (1). His particularly brutal murders (1) were advertised in the new newspapers (1) and these led to debates in parliament (1) which ultimately led to social reforms (1) such as slum clearance programmes (1)” = 5 marks maximum.

3. Study Sources D & E [5]
How far does Source E agree with Source D about why the Ripper was not caught?

- | | | |
|----|---|-------|
| L1 | Description of summary of the sources (“D says....E says...”). | [1-2] |
| L2 | One sided answer: focuses on either ways the source E does or does not agree with Source D: e.g. “Both sources agree that it was difficult to see clearly at the time of the murders [+elaboration]”. | [2-3] |
| L3 | Balanced answer: focuses on similarities AND differences between the sources, with appropriate use of sources and / or background knowledge. E.g. “...but there are also differences of emphasis between the sources. Source D highlights how difficult it was to get an accurate physical description, whereas Source E focuses on the lack of policemen in the area”. | [4-5] |

4. “The Whitechapel Murders were directly responsible for an improvement in conditions in the East End after 1888” [10]
Do you agree?

- | | | |
|----|---|--------|
| L1 | General statements, agreeing or disagreeing but with no real evidence of sharp background knowledge. | [1-3] |
| L2 | One sided answer either agreeing or disagreeing, using sources and / or background knowledge. | [3-5] |
| L3 | Two sided answer, agreeing and disagreeing, with evidence from sources and / or background knowledge used appropriately. Such answers will tend to point out what did change after 1888 in one section, and what didn't in another. | [6-8] |
| L4 | As L3, but candidate shows sophistication of analysis. Such answers will move towards “Changes certainly occurred, but Jack wasn't directly responsible for them because they had already started anyway”. | [9-10] |